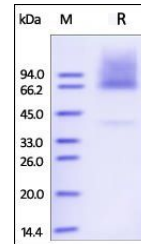


## Product Datasheet

### Human Glypican 3 (S359F) Protein (orb257514)

<b>Description</b>	Human Glypican 3 (S359F), His Tag, low endotoxin is expressed from human 293 cells (HEK293). It cont...
<b>Reactivity</b>	Human
<b>Endotoxins</b>	0.1 EU per µg
<b>Conjugation</b>	Unconjugated
<b>Target</b>	Glypican 3
<b>Preservatives</b>	PBS, pH7.4
<b>Form/Appearance</b>	Powder
<b>Storage</b>	-20°C
<b>Tag</b>	C-6×His
<b>Note</b>	For research use only
<b>Application notes</b>	This protein carries a polyhistidine tag at the C-terminus. The protein has a calculated MW of 61.7 kDa. The protein migrates as 66-115 kDa under reducing (R) condition (SDS-PAGE) due to glycosylation.
<b>Protein Sequence</b>	AAH35972.1
<b>Purity</b>	90%
<b>Source</b>	Human Glypican 3 (S359F), His Tag, low endotoxin (orb257514) is expressed from human 293 cells (HEK293). It contains AA Gln 25 - His 559 (Accession # P51654-1 (S359F)).
<b>MW</b>	61.7 kDa
<b>Uniprot ID</b>	<a href="#">P51654</a>
<b>NCBI</b>	<a href="#">AAH35972.1</a>
<b>Expiration Date</b>	6 months from date of receipt.



SDS-PAGE analysis of Human Glypican 3 pr...