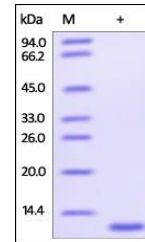


Product Datasheet

Human Glutaredoxin 1 / GLRX1 Protein (orb257509)

Description	Human Glutaredoxin 1, His Tag is expressed from E. coli cells. It contains AA Met 1 - Gln 106 (Acces...
Reactivity	Human
Endotoxins	1.0 EU per µg
Conjugation	Unconjugated
Target	Glutaredoxin 1
Preservatives	50 mM Tris, 150 mM NaCl, pH7.5 with 1 mM DTT
Form/Appearance	Powder
Storage	-20°C to -70°C for 12 months in lyophilized state; -70°C for 3 months under sterile conditions after reconstitution. For long term storage, the product should be stored at lyophilized state at -20°C or lower.
Tag	N-6×His
Note	For research use only
Application notes	This protein carries a polyhistidine tag at the N-terminus. The protein has a calculated MW of 12.7 kDa. The protein migrates as 12 kDa under reducing (R) condition (SDS-PAGE).
Purity	95%
Source	Human Glutaredoxin 1, His Tag (orb257509) is expressed from E. coli cells. It contains AA Met 1 - Gln 106 (Accession # NP_001112362).
MW	12.7 kDa
Uniprot ID	P35754
NCBI	NP_001112362
Expiration Date	6 months from date of receipt.



SDS-PAGE analysis of Human Glutaredoxin ...