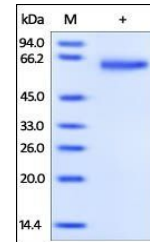


## Product Datasheet

### Human GFR alpha-1 Protein (orb257499)

<b>Description</b>	Human GFR alpha-1, His Tag is expressed from human 293 cells (HEK293). It contains AA Asp 25 - Ser 4...
<b>Reactivity</b>	Human
<b>Endotoxins</b>	1.0 EU per µg
<b>Conjugation</b>	Unconjugated
<b>Target</b>	GFR alpha-1
<b>Preservatives</b>	PBS, pH7.4
<b>Form/Appearance</b>	Powder
<b>Storage</b>	-20°C
<b>Tag</b>	C-10×His
<b>Note</b>	For research use only
<b>Application notes</b>	This protein carries a polyhistidine tag at the C-terminus. The protein has a calculated MW of 45.5 kDa. The protein migrates as 55-60 kDa under reducing (R) condition (SDS-PAGE) due to glycosylation.
<b>Protein Sequence</b>	NP_665736.1
<b>Purity</b>	95%
<b>Source</b>	Human GFR alpha-1, His Tag (orb257499) is expressed from human 293 cells (HEK293). It contains AA Asp 25 - Ser 424 (Accession # NP_665736.1).
<b>MW</b>	45.5 kDa
<b>Uniprot ID</b>	<a href="#">P56159</a>
<b>NCBI</b>	<a href="#">NP_665736.1</a>
<b>Expiration Date</b>	6 months from date of receipt.



SDS-PAGE analysis of Human GFR alpha-1 p...