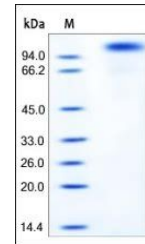


Product Datasheet

Mouse Her2 / ErbB2 Protein (orb257436)

Description	Mouse Her2, His Tag is expressed from human 293 cells (HEK293). It contains AA Thr 23 - Thr 653 (Acc...
Reactivity	Mouse
Endotoxins	1.0 EU per µg
Conjugation	Unconjugated
Target	Her2
Preservatives	PBS, pH7.4
Form/Appearance	Powder
Storage	-20°C
Tag	C-6×His
Note	For research use only
Application notes	This protein carries a polyhistidine tag at the C-terminus. The protein has a calculated MW of 70.6 kDa. The protein migrates as 80-95 kDa under reducing (R) condition (SDS-PAGE) due to glycosylation.
Protein Sequence	AAH53078.1
Purity	95%
Source	Mouse Her2, His Tag (orb257436) is expressed from human 293 cells (HEK293). It contains AA Thr 23 - Thr 653 (Accession # AAH53078.1).
MW	70.6 kDa
Uniprot ID	P70424
NCBI	AAH53078.1
Expiration Date	6 months from date of receipt.



SDS-PAGE analysis of Mouse Her2 protein