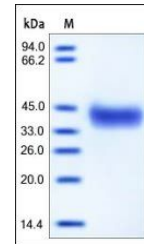


Product Datasheet

Mouse EpCAM / TROP1 Protein (orb257433)

Description	Mouse EpCAM, His Tag is expressed from human 293 cells (HEK293). It contains AA Gln 24 - Thr 266 (Ac...
Reactivity	Mouse
Endotoxins	1.0 EU per µg
Conjugation	Unconjugated
Target	EpCAM
Preservatives	PBS, pH7.4
Form/Appearance	Powder
Storage	-20°C
Tag	C-6×His
Note	For research use only
Application notes	This protein carries a polyhistidine tag at the C-terminus. The protein has a calculated MW of 28.5 kDa. The protein migrates as 33-38 kDa under reducing (R) condition (SDS-PAGE) due to glycosylation.
Protein Sequence	AAH05618.1
Purity	98%
Source	Mouse EpCAM, His Tag (orb257433) is expressed from human 293 cells (HEK293). It contains AA Gln 24 - Thr 266 (Accession # AAH05618.1).
MW	28.5 kDa
Uniprot ID	Q99JW5
NCBI	AAH05618.1
Expiration Date	6 months from date of receipt.



SDS-PAGE analysis of Mouse EpCAM protein