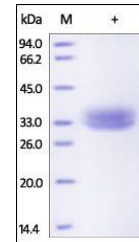


Product Datasheet

Rhesus macaque EpCAM / TROP1 Protein (orb257427)

Description	Rhesus macaque EpCAM, His Tag is expressed from human 293 cells (HEK293). It contains AA Gln 24 - Lys...
Reactivity	Monkey
Endotoxins	1.0 EU per µg
Conjugation	Unconjugated
Target	EpCAM
Preservatives	PBS, pH7.4
Form/Appearance	Powder
Storage	-20°C
Tag	C-6×His
Note	For research use only
Application notes	This protein carries a polyhistidine tag at the C-terminus. The protein has a calculated MW of 28.2 kDa. The protein migrates as 33-40 kDa under reducing (R) condition (SDS-PAGE) due to glycosylation.
Protein Sequence	Gln 24 - Lys 265
Purity	95%
Source	Rhesus macaque EpCAM, His Tag (orb257427) is expressed from human 293 cells (HEK293). It contains AA Gln 24 - Lys 265 (Accession # Q1WER1).
MW	28.2 kDa
Uniprot ID	Q1WER1
Expiration Date	6 months from date of receipt.



SDS-PAGE analysis of Monkey EpCAM protei...