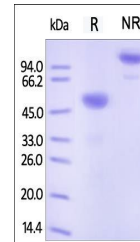


## Product Datasheet

### Human Ephrin-A1 / EFNA1 Protein (orb257414)

<b>Description</b>	Human Ephrin-A1, Fc Tag is expressed from human 293 cells (HEK293). It contains AA Asp 19 - Ser 182 ...
<b>Reactivity</b>	Human
<b>Endotoxins</b>	1.0 EU per µg
<b>Conjugation</b>	Unconjugated
<b>Target</b>	Ephrin-A1
<b>Preservatives</b>	50 mM Tris, 100 mM Glycine, pH7.5
<b>Form/Appearance</b>	Powder
<b>Storage</b>	-20°C
<b>Tag</b>	C-Fc
<b>Note</b>	For research use only
<b>Application notes</b>	This protein carries a human IgG1 Fc tag at the C-terminus. The protein has a calculated MW of 46.0 kDa. As a result of glycosylation, the protein migrates as 53-57 kDa under reducing (R) condition, and 100-115 kDa under non-reducing (NR) condition (SDS-PAGE).
<b>Protein Sequence</b>	NP_004419.2
<b>Purity</b>	95%
<b>Source</b>	Human Ephrin-A1, Fc Tag (orb257414) is expressed from human 293 cells (HEK293). It contains AA Asp 19 - Ser 182 (Accession # P20827-1).
<b>MW</b>	46.0 kDa
<b>Uniprot ID</b>	<b>P20827</b>
<b>NCBI</b>	<b>NP_004419.2</b>
<b>Expiration Date</b>	6 months from date of receipt.



SDS-PAGE analysis of Human Ephrin-A1 pro...