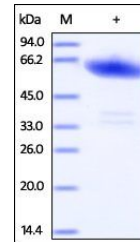


## Product Datasheet

### Human Ephrin-A3 / EFNA3 Protein (orb257407)

<b>Description</b>	Human Ephrin-A3, Fc Tag is expressed from human 293 cells (HEK293). It contains AA Gln 23 - Ser 213 ...
<b>Reactivity</b>	Human
<b>Endotoxins</b>	1.0 EU per µg
<b>Conjugation</b>	Unconjugated
<b>Target</b>	Ephrin-A3
<b>Preservatives</b>	Tris with Glycine, Arginine and NaCl, pH7.5
<b>Form/Appearance</b>	Powder
<b>Storage</b>	-20°C
<b>Tag</b>	C-Fc
<b>Note</b>	For research use only
<b>Application notes</b>	This protein carries a human IgG1 Fc tag at the C-terminus. The protein has a calculated MW of 48.4 kDa. The protein migrates as 60-65 kDa when calibrated against Star Ribbon Pre-stained Protein Marker under reducing (R) condition (SDS-PAGE) due to glycosylation.
<b>Protein Sequence</b>	AAI10407
<b>Purity</b>	90%
<b>Source</b>	Human Ephrin-A3, Fc Tag (orb257407) is expressed from human 293 cells (HEK293). It contains AA Gln 23 - Ser 213 (Accession # AAI10407).
<b>MW</b>	48.4 kDa
<b>Uniprot ID</b>	<a href="#">P52797</a>
<b>NCBI</b>	<a href="#">AAI10407</a>
<b>Expiration Date</b>	6 months from date of receipt.



SDS-PAGE analysis of Human Ephrin-A3 pro...