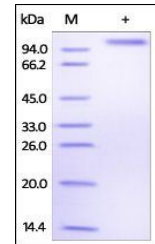


## Product Datasheet

### Human DLL4 Protein (orb257400)

<b>Description</b>	Human DLL4, Fc Tag is expressed from human 293 cells (HEK293). It contains AA Ser 27 - Pro 524 (Acce...
<b>Reactivity</b>	Human
<b>Endotoxins</b>	0.01 EU per µg
<b>Conjugation</b>	Unconjugated
<b>Target</b>	DLL4
<b>Preservatives</b>	100 mM Glycine, 150 mM NaCl, 25 mM Arginine, 50 mM Tris, pH7.5
<b>Form/Appearance</b>	Powder
<b>Storage</b>	-20°C
<b>Tag</b>	C-Fc
<b>Note</b>	For research use only
<b>Application notes</b>	This protein carries a human IgG1 Fc tag at the C-terminus. The protein has a calculated MW of 80.9 kDa. The protein migrates as 95-100 kDa when calibrated against Star Ribbon Pre-stained Protein Marker under reducing (R) condition (SDS-PAGE) due to glycosylation.
<b>Protein Sequence</b>	NP_061947.1
<b>Purity</b>	95%
<b>Source</b>	Human DLL4, Fc Tag (orb257400) is expressed from human 293 cells (HEK293). It contains AA Ser 27 - Pro 524 (Accession # NP_061947.1).
<b>MW</b>	80.9 kDa
<b>Uniprot ID</b>	<a href="#">Q9NR61</a>
<b>NCBI</b>	<a href="#">NP_061947.1</a>
<b>Expiration Date</b>	6 months from date of receipt.



SDS-PAGE analysis of Human DLL4 protein