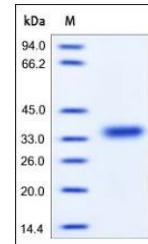


Product Datasheet

Human CXADR / CAR Protein (orb257390)

Description	Human CXADR, His Tag is expressed from human 293 cells (HEK293). It contains AA Leu 20 - Gly 237 (Ac...
Reactivity	Human
Endotoxins	1.0 EU per µg
Conjugation	Unconjugated
Target	CXADR
Preservatives	PBS, pH7.4
Form/Appearance	Powder
Storage	-20°C
Tag	C-6×His
Note	For research use only
Application notes	This protein carries a polyhistidine tag at the C-terminus. The protein has a calculated MW of 24.9 kDa. The protein migrates as 32-35 kDa under reducing (R) condition (SDS-PAGE) due to glycosylation.
Protein Sequence	NP_001329.1
Purity	95%
Source	Human CXADR, His Tag (orb257390) is expressed from human 293 cells (HEK293). It contains AA Leu 20 - Gly 237 (Accession # NP_001329.1).
MW	24.9 kDa
Uniprot ID	P78310
NCBI	NP_001329.1
Expiration Date	6 months from date of receipt.



SDS-PAGE analysis of Human CXADR protein