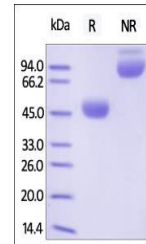


Product Datasheet

Human CTLA-4 / CD152 Protein (orb257378)

Description	Human CTLA-4, Fc Tag is expressed from human 293 cells (HEK293). It contains AA Ala 37 - Ser 160 (Ac...
Reactivity	Human
Endotoxins	1.0 EU per µg
Conjugation	Unconjugated
Target	CTLA-4
Preservatives	Tris with Glycine, Arginine and NaCl, pH7.5
Form/Appearance	Powder
Storage	-20°C
Tag	C-Fc
Note	For research use only
Application notes	This protein carries a human IgG1 Fc tag at the C-terminus. The protein has a calculated MW of 39.9 kDa. As a result of glycosylation, the protein migrates as 45-55 kDa under reducing (R) condition, and 90 kDa under non-reducing (NR) condition (SDS-PAGE).
Protein Sequence	NP_005205.2
Purity	98%
Source	Human CTLA-4, Fc Tag (orb257378) is expressed from human 293 cells (HEK293). It contains AA Ala 37 - Ser 160 (Accession # P16410-1).
MW	39.9 kDa
Uniprot ID	P16410
NCBI	NP_005205.2
Expiration Date	6 months from date of receipt.



SDS-PAGE analysis of Human CTLA-4 protei...