
Product Datasheet

Cynomolgus / Rhesus macaque CTLA-4 Protein (orb257376)

Description

Cynomolgus / Rhesus macaque CTLA-4, Fc Tag is

kDa + -

contains A...

Reactivity

Monkey

Endotoxins

1.0 EU per µg

Conjugation

Unconjugated

Target

CTLA-4

Preservatives

50 mM Tris, 100 mM Glycine, pH7.5

Form/Appearance

Powder

Storage

-20°C

Tag

C-Fc

Note

For research use only

Application notes

This protein carries a human IgG1 Fc tag at the C-terminus. The protein has a calculated MW of 39.9 kDa. As a result of glycosylation, the protein migrates as 42-50 kDa under reducing (R) condition, and 80-100 kDa under non-reducing (NR) condition (SDS-PAGE).

Protein Sequence

XP_005574071.1

Purity

90%

Source

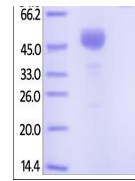
Cynomolgus / Rhesus macaque CTLA-4, Fc Tag (orb257376) is expressed from human 293 cells (HEK293). It contains AA Ala 37 - Ser 160 (Accession # G7PL88-1). In the region Ala 37 - Ser 160, the AA sequence of Cynomolgus and Rhesus macaque CTLA-4 are homologous.

MW

39.9 kDa

Uniprot ID
[G7PL88](#)
NCBI
[XP_005574071.1](#)
Expiration Date

6 months from date of receipt.



SDS-PAGE analysis of Monkey CTLA-4 prote...