

---

## Product Datasheet

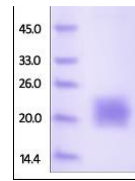
### Cynomolgus / Rhesus macaque CTLA-4 Protein (orb257375)

**Description**

Cynomolgus / Rhesus macaque CTLA-4, His Tag is



	contains ...
<b>Reactivity</b>	Monkey
<b>Endotoxins</b>	1.0 EU per µg
<b>Conjugation</b>	Unconjugated
<b>Target</b>	CTLA-4
<b>Preservatives</b>	PBS, pH7.4
<b>Form/Appearance</b>	Powder
<b>Storage</b>	-20°C
<b>Tag</b>	C-6×His
<b>Note</b>	For research use only
<b>Application notes</b>	This protein carries a polyhistidine tag at the C-terminus. The protein has a calculated MW of 14.1 kDa. The protein migrates as 19-24 kDa under reducing (R) condition (SDS-PAGE) due to glycosylation.
<b>Protein Sequence</b>	XP_005574071.1
<b>Purity</b>	95%
<b>Source</b>	Cynomolgus / Rhesus macaque CTLA-4, His Tag (orb257375) is expressed from human 293 cells (HEK293). It contains AA Ala 37 - Ser 160 (Accession # G7PL88-1). In the region Ala 37 - Ser 160, the AA sequence of Cynomolgus and Rhesus macaque CTLA-4 are homologous.
<b>MW</b>	14.1 kDa
<b>Uniprot ID</b>	<a href="#">G7PL88</a>
<b>NCBI</b>	<a href="#">XP_005574071.1</a>
<b>Expiration Date</b>	6 months from date of receipt.



SDS-PAGE analysis of Monkey CTLA-4 prote...