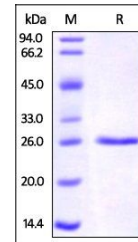


## Product Datasheet

# Human C-Reactive Protein (CRP) Protein (orb257363)

<b>Description</b>	Human C-Reactive Protein, His Tag is expressed from human 293 cells (HEK293). It contains AA Gln 19 ...
<b>Reactivity</b>	Human
<b>Endotoxins</b>	1.0 EU per µg
<b>Conjugation</b>	Unconjugated
<b>Target</b>	C-Reactive Protein
<b>Preservatives</b>	Tris-NaCl buffer pH8.0
<b>Form/Appearance</b>	Powder
<b>Storage</b>	-20°C
<b>Tag</b>	C-6×His
<b>Note</b>	For research use only
<b>Application notes</b>	This protein carries a polyhistidine tag at the C-terminus. The protein has a calculated MW of 23.9 kDa. The protein migrates as 26 kDa under reducing (R) condition (SDS-PAGE).
<b>Protein Sequence</b>	NP_000558.2
<b>Purity</b>	95%
<b>Source</b>	Human C-Reactive Protein, His Tag (orb257363) is expressed from human 293 cells (HEK293). It contains AA Gln 19 - Pro 224 (Accession # NP_000558.2).
<b>MW</b>	23.9 kDa
<b>Uniprot ID</b>	<a href="#">P02741</a>
<b>NCBI</b>	<a href="#">NP_000558.2</a>
<b>Expiration Date</b>	6 months from date of receipt.



SDS-PAGE analysis of Human C-Reactive pr...