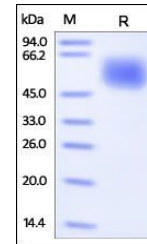


Product Datasheet

Human CNTF R alpha Protein (orb257353)

Description	Human CNTF R alpha, His Tag is expressed from human 293 cells (HEK293). It contains AA Gln 23 - Pro ...
Reactivity	Human
Endotoxins	1.0 EU per µg
Conjugation	Unconjugated
Target	CNTF R alpha
Preservatives	PBS, pH7.4
Form/Appearance	Powder
Storage	-20°C
Tag	C-11×His
Note	For research use only
Application notes	This protein carries a polyhistidine tag at the C-terminus. The protein has a calculated MW of 37.6 kDa. The protein migrates as 45-66 kDa under reducing (R) condition (SDS-PAGE) due to glycosylation.
Protein Sequence	AAH01492
Purity	95%
Source	Human CNTF R alpha, His Tag (orb257353) is expressed from human 293 cells (HEK293). It contains AA Gln 23 - Pro 346 (Accession # AAH01492).
MW	37.6 kDa
Uniprot ID	P26992
NCBI	AAH01492
Expiration Date	6 months from date of receipt.



SDS-PAGE analysis of Human CNTF R alpha ...