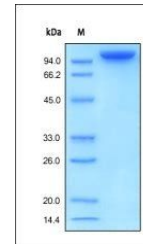


Product Datasheet

Human Contactin-2 CNTN2 Protein (orb257352)

Description	Human Contactin-2, His Tag is expressed from human 293 cells (HEK293). It contains AA Ser 31 - Asn 1...
Reactivity	Human
Endotoxins	1.0 EU per µg
Conjugation	Unconjugated
Target	Contactin-2
Preservatives	PBS, pH7.4
Form/Appearance	Powder
Storage	-20°C
Tag	C-6×His
Note	For research use only
Application notes	This protein carries a polyhistidine tag at the C-terminus. The protein has a calculated MW of 108.3 kDa. The protein migrates as 116-130 kDa under reducing (R) condition (SDS-PAGE) due to glycosylation.
Protein Sequence	NP_005067.1
Purity	95%
Source	Human Contactin-2, His Tag (orb257352) is expressed from human 293 cells (HEK293). It contains AA Ser 31 - Asn 1012 (Accession # NP_005067.1).
MW	108.3 kDa
Uniprot ID	Q02246
NCBI	NP_005067.1
Expiration Date	6 months from date of receipt.



SDS-PAGE analysis of Human Contactin-2 p...