

## Product Datasheet

### Human Clusterin Protein, His Tag (orb257350)

<b>Description</b>	Clusterin (CLU) is also known as dimeric acidic glycoprotein (DAG protein), testosterone repressed prostate message-2 (TRPM-2), sulfated glycoprotein-2 (SGP-2) and complement lysis inhibitor (CLI), is a secreted multifunctional glycoprotein protein which belongs to the clusterin family. Intracellular cleavages of the precursor of clusterin remove the signal peptide and generate comparably sized $\alpha$ and $\beta$ chains which are secreted as an 80 kDa Nglycosylated disulfidelinked heterodimer. DAG protein is predominantly expressed in adult testis, ovary, adrenal gland, liver, heart, and brain and in many epithelial tissues during embryonic development. Clusterin involve in several basic biological events such as cell death, tumor progression, and neurodegenerative disorders. Upregulation of clusterin mR and protein levels detected in diverse disease states and in in vitro systems have led to suggestions that it functions in membrane lipid recycling, in apoptotic cell death, and as a stress-induced secreted chaperone protein, amongst others.
<b>Reactivity</b>	Human
<b>Endotoxins</b>	1.0 EU per $\mu$ g
<b>Conjugation</b>	Unconjugated
<b>Target</b>	Clusterin, CLUS
<b>Preservatives</b>	PBS, pH7.4
<b>Form/Appearance</b>	Powder
<b>Storage</b>	-20°C
<b>Tag</b>	C-6 $\times$ His
<b>Note</b>	For research use only
<b>Application notes</b>	This protein carries a polyhistidine tag at the C-terminus. The protein has a calculated MW of 50.9 kDa. The protein migrates as 32-40 kDa under reducing (R) condition (SDS-PAGE).

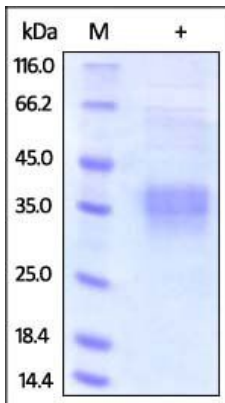
**Biorbyt Ltd.**

7 Signet Court, Swann's Road,  
Cambridge, CB5 8LA, United Kingdom  
Email: [info@biorbyt.com](mailto:info@biorbyt.com), [support@biorbyt.com](mailto:support@biorbyt.com)  
Phone: [+44 \(0\) 1223 859-353](tel:+44(0)1223859353) | Fax: [+1 \(415\) 651-8558](tel:+1(415)6518558)

**Biorbyt LLC.**

68 TW Alexander Drive,  
Durham, NC, 27713, United States  
Email: [info@biorbyt.com](mailto:info@biorbyt.com), [support@biorbyt.com](mailto:support@biorbyt.com)  
Phone: [+1 \(415\) 906-5211](tel:+1(415)9065211) | Fax: [+1 \(415\) 651-8558](tel:+1(415)6518558)

<b>Protein Sequence</b>	NP_001822.3
<b>Purity</b>	95%
<b>Source</b>	Human Clusterin, His Tag (orb257350) is expressed from human 293 cells (HEK293). It contains AA Asp 23 - Glu 449 (Accession # NP_001822.3).
<b>MW</b>	50.9 kDa
<b>Uniprot ID</b>	<b>P10909</b>
<b>NCBI</b>	<b>NP_001822.3</b>
<b>Expiration Date</b>	6 months from date of receipt.



SDS-PAGE analysis of Human CLU protein

**Biorbyt Ltd.**

7 Signet Court, Swann's Road,  
Cambridge, CB5 8LA, United Kingdom  
Email: [info@biorbyt.com](mailto:info@biorbyt.com), [support@biorbyt.com](mailto:support@biorbyt.com)  
Phone: [+44 \(0\) 1223 859-353](tel:+44(0)1223859353) | Fax: [+1 \(415\) 651-8558](tel:+1(415)6518558)

**Biorbyt LLC.**

68 TW Alexander Drive,  
Durham, NC, 27713, United States  
Email: [info@biorbyt.com](mailto:info@biorbyt.com), [support@biorbyt.com](mailto:support@biorbyt.com)  
Phone: [+1 \(415\) 906-5211](tel:+1(415)9065211) | Fax: [+1 \(415\) 651-8558](tel:+1(415)6518558)