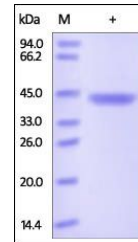


Product Datasheet

Human Chitinase 3-like 1 / CHI3L1 Protein (orb257343)

Description	Human CHI3L1, His Tag is expressed from human 293 cells (HEK293). It contains AA Tyr 22 - Thr 383 (A...
Reactivity	Human
Endotoxins	1.0 EU per µg
Conjugation	Unconjugated
Target	Chitinase 3-like 1
Preservatives	PBS, pH7.4
Form/Appearance	Powder
Storage	-20°C
Tag	C-6×His
Note	For research use only
Application notes	This protein carries a polyhistidine tag at the C-terminus. The protein has a calculated MW of 41.2 kDa. The protein migrates as 40-45 kDa under reducing (R) condition (SDS-PAGE) due to glycosylation.
Protein Sequence	AAH38354
Purity	95%
Source	Human CHI3L1, His Tag (orb257343) is expressed from human 293 cells (HEK293). It contains AA Tyr 22 - Thr 383 (Accession # AAH38354).
MW	41.2 kDa
Uniprot ID	P36222
NCBI	AAH38354
Expiration Date	6 months from date of receipt.



SDS-PAGE analysis of Human Chitinase 3-l...