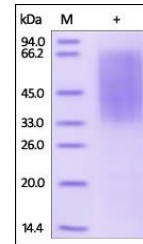


## Product Datasheet

### Human CD300LG / Nepmucin Protein (orb257331)

<b>Description</b>	Human CD300LG, His Tag is expressed from human 293 cells (HEK293). It contains AA Leu 19 - Arg 247 (...)
<b>Reactivity</b>	Human
<b>Endotoxins</b>	1.0 EU per µg
<b>Conjugation</b>	Unconjugated
<b>Target</b>	CD300LG
<b>Preservatives</b>	PBS, pH7.4
<b>Form/Appearance</b>	Powder
<b>Storage</b>	-20°C
<b>Tag</b>	C-6×His
<b>Note</b>	For research use only
<b>Application notes</b>	This protein carries a polyhistidine tag at the C-terminus. The protein has a calculated MW of 25.6 kDa. The protein migrates as 33-68 kDa under reducing (R) condition (SDS-PAGE) due to different glycosylation.
<b>Protein Sequence</b>	AAH25395
<b>Purity</b>	95%
<b>Source</b>	Human CD300LG, His Tag (orb257331) is expressed from human 293 cells (HEK293). It contains AA Leu 19 - Arg 247 (Accession # AAH25395).
<b>MW</b>	25.6 kDa
<b>Uniprot ID</b>	<a href="#">Q6UXG3</a>
<b>NCBI</b>	<a href="#">AAH25395</a>
<b>Expiration Date</b>	6 months from date of receipt.



SDS-PAGE analysis of Human CD300LG prote...