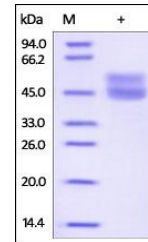


Product Datasheet

Human CD3 epsilon Protein (orb257328)

Description	Human CD3 epsilon, Fc,His Tag is expressed from human 293 cells (HEK293). It contains AA Asp 23 - As...
Reactivity	Human
Endotoxins	1.0 EU per µg
Conjugation	Unconjugated
Target	CD3 epsilon
Preservatives	PBS, pH7.4
Form/Appearance	Powder
Storage	-20°C
Tag	C-Fc & C-6×His
Note	For research use only
Application notes	This protein carries a human IgG1 Fc tag at the C-terminus, followed by a polyhistidine tag. The protein has a calculated MW of 39.2 kDa. The protein migrates as 43-50 kDa when calibrated against Star Ribbon Pre-stained Protein Marker under reducing (R) condition (SDS-PAGE) due to glycosylation.
Protein Sequence	NP_000724.1
Purity	95%
Source	Human CD3 epsilon, Fc,His Tag (orb257328) is expressed from human 293 cells (HEK293). It contains AA Asp 23 - Asp 126 (Accession # NP_000724.1).
MW	39.2 kDa
Uniprot ID	P07766
NCBI	NP_000724.1
Expiration Date	6 months from date of receipt.



SDS-PAGE analysis of Human CD3 epsilon p...