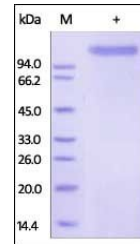


## Product Datasheet

### Human E-Selectin / CD62E Protein (orb257327)

<b>Description</b>	Human E-Selectin, Fc Tag is expressed from human 293 cells (HEK293). It contains AA Trp 22 - Phe 556...
<b>Reactivity</b>	Human
<b>Endotoxins</b>	1.0 EU per µg
<b>Conjugation</b>	Unconjugated
<b>Target</b>	E-Selectin
<b>Preservatives</b>	Tris with Glycine, Arginine and NaCl, pH7.5
<b>Form/Appearance</b>	Powder
<b>Storage</b>	-20°C
<b>Tag</b>	C-Fc
<b>Note</b>	For research use only
<b>Application notes</b>	This protein carries a human IgG1 Fc tag at the C-terminus. The protein has a calculated MW of 84.8 kDa. The protein migrates as 110-140 kDa under reducing (R) condition (SDS-PAGE) due to glycosylation.
<b>Protein Sequence</b>	NP_000441.2
<b>Purity</b>	90%
<b>Source</b>	Human E-Selectin, Fc Tag (orb257327) is expressed from human 293 cells (HEK293). It contains AA Trp 22 - Phe 556 (Accession # NP_000441.2).
<b>MW</b>	84.8 kDa
<b>Uniprot ID</b>	<b>P16581</b>
<b>NCBI</b>	<b>NP_000441.2</b>
<b>Expiration Date</b>	6 months from date of receipt.



SDS-PAGE analysis of Human E-Selectin pr...