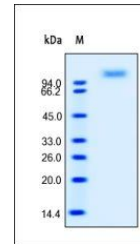


## Product Datasheet

### Human E-Selectin / CD62E Protein (orb257325)

<b>Description</b>	Human E-Selectin, His Tag is expressed from human 293 cells (HEK293). It contains AA Trp 22 - Pro 55...
<b>Reactivity</b>	Human
<b>Endotoxins</b>	1.0 EU per µg
<b>Conjugation</b>	Unconjugated
<b>Target</b>	E-Selectin
<b>Preservatives</b>	PBS, pH7.4
<b>Form/Appearance</b>	Powder
<b>Storage</b>	-20°C
<b>Tag</b>	C-6×His
<b>Note</b>	For research use only
<b>Application notes</b>	This protein carries a polyhistidine tag at the C-terminus. The protein has a calculated MW of 59.5 kDa. The protein migrates as 67-96 kDa under reducing (R) condition (SDS-PAGE) due to glycosylation.
<b>Protein Sequence</b>	NP_000441.2
<b>Purity</b>	95%
<b>Source</b>	Human E-Selectin, His Tag (orb257325) is expressed from human 293 cells (HEK293). It contains AA Trp 22 - Pro 556 (Accession # NP_000441.2).
<b>MW</b>	59.5 kDa
<b>Uniprot ID</b>	<b>P16581</b>
<b>NCBI</b>	<b>NP_000441.2</b>
<b>Expiration Date</b>	6 months from date of receipt.



SDS-PAGE analysis of Human E-Selectin pr...