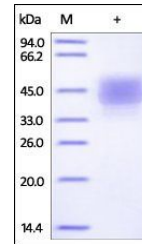


Product Datasheet

Cynomolgus CD3 epsilon Protein (orb257324)

| | |
|--------------------------|---|
| Description | Cynomolgus CD3 epsilon, Fc,His Tag is expressed from human 293 cells (HEK293). It contains AA Gln 22... |
| Reactivity | Monkey |
| Endotoxins | 1.0 EU per µg |
| Conjugation | Unconjugated |
| Target | CD3 epsilon |
| Preservatives | Tris with Glycine, Arginine and NaCl, pH7.5 |
| Form/Appearance | Powder |
| Storage | -20°C |
| Tag | C-Fc & C-6×His |
| Note | For research use only |
| Application notes | This protein carries a human IgG1 Fc tag at the C-terminus, followed by a polyhistidine tag. The protein has a calculated MW of 38.3 kDa. The protein migrates as 43-50 kDa under reducing (R) condition (SDS-PAGE) due to glycosylation. |
| Protein Sequence | Gln 22 - Asp 117 |
| Purity | 95% |
| Source | Cynomolgus CD3 epsilon, Fc,His Tag (orb257324) is expressed from human 293 cells (HEK293). It contains AA Gln 22 - Asp 117 (Accession # Q95LI5). |
| MW | 38.3 kDa |
| Uniprot ID | Q95LI5 |
| Expiration Date | 6 months from date of receipt. |



SDS-PAGE analysis of Monkey CD3 epsilon
...