

Product Datasheet

Human CD300c / LMIR2 Protein (orb257316)

Description Human CD300c, His Tag is expressed from human 293 cells (HEK293). It contains AA Gly 21 - Arg 183 (A...

Reactivity Human

Endotoxins 1.0 EU per µg

Conjugation Unconjugated

Target CD300c

Preservatives PBS, pH7.4

Form/Appearance Powder

Storage -20°C

Tag C-6×His

Note For research use only

Application notes This protein carries a polyhistidine tag at the C-terminus. The protein has a calculated MW of 18.67 kDa. The protein migrates as 26-43 kDa under reducing (R) condition (SDS-PAGE) due to glycosylation.

Protein Sequence AAH22279

Purity 90%

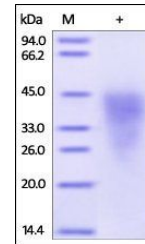
Source Human CD300c, His Tag (orb257316) is expressed from human 293 cells (HEK293). It contains AA Gly 21 - Arg 183 (Accession # AAH22279).

MW 18.67 kDa

Uniprot ID [Q08708](#)

NCBI [AAH22279](#)

Expiration Date 6 months from date of receipt.



SDS-PAGE analysis of Human CD300c protei...