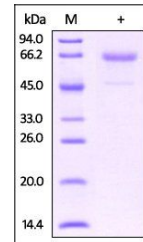


## Product Datasheet

# Mouse Glycophorin A / CD235a Protein (orb257312)

<b>Description</b>	Mouse Glycophorin A, Fc,His Tag is expressed from human 293 cells (HEK293). It contains AA Met 1 - V...
<b>Reactivity</b>	Mouse
<b>Endotoxins</b>	1.0 EU per µg
<b>Conjugation</b>	Unconjugated
<b>Target</b>	Glycophorin A
<b>Preservatives</b>	Tris with Glycine, Arginine and NaCl, pH7.5
<b>Form/Appearance</b>	Powder
<b>Storage</b>	-20°C
<b>Tag</b>	N-Fc & C-6×His
<b>Note</b>	For research use only
<b>Application notes</b>	This protein carries a human IgG1 Fc tag at the N-terminus and a polyhistidine tag at the C-terminus. The protein has a calculated MW of 39.1 kDa. The protein migrates as 60-66 kDa under reducing (R) condition (SDS-PAGE) due to glycosylation.
<b>Protein Sequence</b>	Met 1 - Val 108
<b>Purity</b>	95%
<b>Source</b>	Mouse Glycophorin A, Fc,His Tag (orb257312) is expressed from human 293 cells (HEK293). It contains AA Met 1 - Val 108 (Accession # P14220).
<b>MW</b>	39.1 kDa
<b>Uniprot ID</b>	<b>P14220</b>
<b>Expiration Date</b>	6 months from date of receipt.



SDS-PAGE analysis of Mouse Glycophorin A...