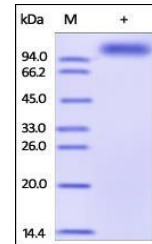


## Product Datasheet

### Human ALCAM Protein (orb257290)

<b>Description</b>	Human ALCAM, Fc Tag is expressed from human 293 cells (HEK293). It contains AA Trp 28 - Ala 526 (Acc...
<b>Reactivity</b>	Human
<b>Endotoxins</b>	1.0 EU per µg
<b>Conjugation</b>	Unconjugated
<b>Target</b>	ALCAM
<b>Preservatives</b>	Tris with Glycine, Arginine and NaCl, pH7.5
<b>Form/Appearance</b>	Powder
<b>Storage</b>	-20°C
<b>Tag</b>	C-Fc
<b>Note</b>	For research use only
<b>Application notes</b>	This protein carries a human IgG1 Fc tag at the C-terminus. The protein has a calculated MW of 82.6 kDa. The protein migrates as 95-116 kDa under reducing (R) condition (SDS-PAGE) due to glycosylation.
<b>Protein Sequence</b>	NP_001618
<b>Purity</b>	95%
<b>Source</b>	Human ALCAM, Fc Tag (orb257290) is expressed from human 293 cells (HEK293). It contains AA Trp 28 - Ala 526 (Accession # NP_001618).
<b>MW</b>	82.6 kDa
<b>Uniprot ID</b>	<a href="#">Q13740</a>
<b>NCBI</b>	<a href="#">NP_001618</a>
<b>Expiration Date</b>	6 months from date of receipt.



SDS-PAGE analysis of Human ALCAM protein