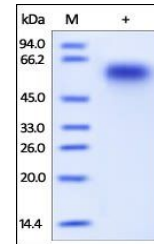


Product Datasheet

Human CD46 Protein (orb257285)

Description	Human CD46, His Tag is expressed from human 293 cells (HEK293). It contains AA Cys 35 - Asp 328 (Acc...
Reactivity	Human
Endotoxins	1.0 EU per µg
Conjugation	Unconjugated
Target	CD46
Preservatives	PBS, pH7.4
Form/Appearance	Powder
Storage	-20°C
Tag	C-6×His
Note	For research use only
Application notes	This protein carries a polyhistidine tag at the C-terminus. The protein has a calculated MW of 33.6 kDa. The protein migrates as 45-60 kDa under reducing (R) condition (SDS-PAGE) due to glycosylation.
Protein Sequence	AAH30594.1
Purity	90%
Source	Human CD46, His Tag (orb257285) is expressed from human 293 cells (HEK293). It contains AA Cys 35 - Asp 328 (Accession # AAH30594.1).
MW	33.6 kDa
Uniprot ID	P15529
NCBI	AAH30594.1
Expiration Date	6 months from date of receipt.



SDS-PAGE analysis of Human CD46 protein