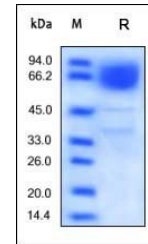


Product Datasheet

Human CD36 / SR-B3 Protein (orb257283)

Description	Human CD36, His Tag is expressed from human 293 cells (HEK293). It contains AA Gly 30 - Asn 439 (Acc...
Reactivity	Human
Endotoxins	1.0 EU per µg
Conjugation	Unconjugated
Target	CD36
Preservatives	PBS, pH7.4
Form/Appearance	Powder
Storage	-20°C
Tag	C-10×His
Note	For research use only
Application notes	This protein carries a polyhistidine tag at the C-terminus. The protein has a calculated MW of 48.5 kDa. The protein migrates as 66-80 kDa under reducing (R) condition (SDS-PAGE) due to glycosylation.
Protein Sequence	NP_001001547.1
Purity	95%
Source	Human CD36, His Tag (orb257283) is expressed from human 293 cells (HEK293). It contains AA Gly 30 - Asn 439 (Accession # NP_001001547.1).
MW	48.5 kDa
Uniprot ID	P16671
NCBI	NP_001001547.1
Expiration Date	6 months from date of receipt.



SDS-PAGE analysis of Human CD36 protein