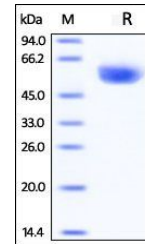


## Product Datasheet

### Rhesus macaque CD4 Protein (orb257268)

<b>Description</b>	Rhesus macaque CD4, His Tag is expressed from human 293 cells (HEK293). It contains AA Lys 26 - Trp ...
<b>Reactivity</b>	Monkey
<b>Endotoxins</b>	1.0 EU per µg
<b>Conjugation</b>	Unconjugated
<b>Target</b>	CD4
<b>Preservatives</b>	PBS, pH7.4
<b>Form/Appearance</b>	Powder
<b>Storage</b>	-20°C
<b>Tag</b>	C-10×His
<b>Note</b>	For research use only
<b>Application notes</b>	This protein carries a polyhistidine tag at the C-terminus. The protein has a calculated MW of 42.3 kDa. The protein migrates as 50-57 kDa under reducing (R) condition (SDS-PAGE) due to glycosylation.
<b>Protein Sequence</b>	Lys 26 - Trp 390
<b>Purity</b>	95%
<b>Source</b>	Rhesus macaque CD4, His Tag (orb257268) is expressed from human 293 cells (HEK293). It contains AA Lys 26 - Trp 390 (Accession # G7N5T8).
<b>MW</b>	42.3 kDa
<b>Uniprot ID</b>	<b>G7N5T8</b>
<b>Expiration Date</b>	6 months from date of receipt.



SDS-PAGE analysis of Monkey CD4 protein