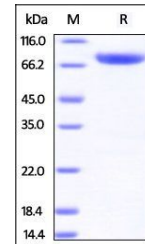


Product Datasheet

Rhesus macaque CD4 Protein (orb257267)

Description	Rhesus macaque CD4, Fc Tag is expressed from human 293 cells (HEK293). It contains AA Lys 26 - Trp 390.
Reactivity	Monkey
Endotoxins	1.0 EU per µg
Conjugation	Unconjugated
Target	CD4
Preservatives	Tris with Glycine, Arginine and NaCl, pH7.5
Form/Appearance	Powder
Storage	-20°C
Tag	C-Fc
Note	For research use only
Application notes	This protein carries a human IgG1 Fc tag at the C-terminus. The protein has a calculated MW of 67.0 kDa. The protein migrates as 67-85 kDa under reducing (R) condition (SDS-PAGE) due to glycosylation.
Protein Sequence	Lys 26 - Trp 390
Purity	95%
Source	Rhesus macaque CD4, Fc Tag (orb257267) is expressed from human 293 cells (HEK293). It contains AA Lys 26 - Trp 390 (Accession # G7N5T8).
MW	67.0 kDa
Uniprot ID	G7N5T8
Expiration Date	6 months from date of receipt.



SDS-PAGE analysis of Monkey CD4 protein