

## Product Datasheet

### Human IL-2 R beta / CD122 Protein (orb257259)

<b>Description</b>	Human IL-2 R beta Protein, His Tag is expressed from human 293 cells (HEK293). It contains AA Ala 27 - Asp 239 (Accession # NP_000869.1).
<b>Reactivity</b>	Human
<b>Endotoxins</b>	1.0 EU per µg
<b>Conjugation</b>	Unconjugated
<b>Target</b>	IL-2 R beta
<b>Preservatives</b>	PBS, pH7.4
<b>Form/Appearance</b>	Powder
<b>Storage</b>	-20°C to -70°C for 12 months in lyophilized state; -70°C for 3 months under sterile conditions after reconstitution. For long term storage, the product should be stored at lyophilized state at -20°C or lower.
<b>Tag</b>	C-6×His
<b>Note</b>	For research use only
<b>Application notes</b>	This protein carries a polyhistidine tag at the C-terminus. The protein has a calculated MW of 25.4 kDa. The protein migrates as 35-45 kDa under reducing (R) condition (SDS-PAGE) due to glycosylation.
<b>Biologically Active?</b>	Yes
<b>Biological Activity</b>	Human IL-2 R beta Protein, His Tag captured on CM5 chip via anti-His antibody, can bind Human IL-2, premium grade with an affinity constant of 1.62 µM as determined in a SPR assay (Biacore T200) (QC tested).
<b>Purity</b>	90%
<b>Source</b>	Human IL-2 R beta Protein, His Tag (orb257259) is expressed from human 293 cells (HEK293). It contains AA Ala 27 - Asp 239 (Accession # NP_000869.1).

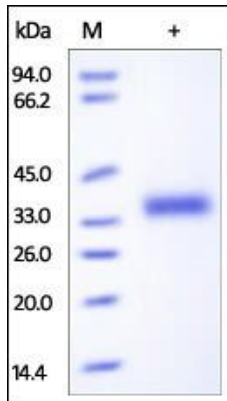
**Biorbyt Ltd.**

7 Signet Court, Swann's Road,  
Cambridge, CB5 8LA, United Kingdom  
Email: [info@biorbyt.com](mailto:info@biorbyt.com), [support@biorbyt.com](mailto:support@biorbyt.com)  
Phone: [+44 \(0\) 1223 859-353](tel:+44(0)1223859353) | Fax: [+1 \(415\) 651-8558](tel:+1(415)6518558)

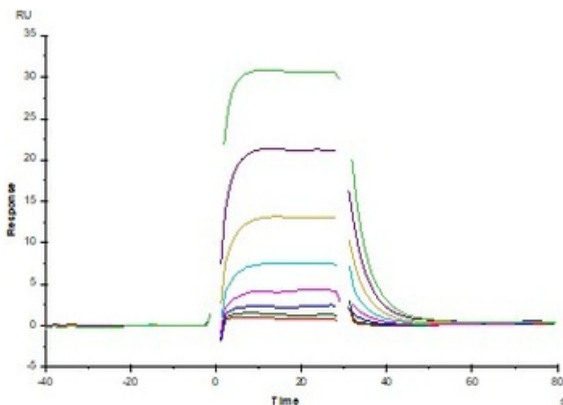
**Biorbyt LLC.**

68 TW Alexander Drive,  
Durham, NC, 27713, United States  
Email: [info@biorbyt.com](mailto:info@biorbyt.com), [support@biorbyt.com](mailto:support@biorbyt.com)  
Phone: [+1 \(415\) 906-5211](tel:+1(415)9065211) | Fax: [+1 \(415\) 651-8558](tel:+1(415)6518558)

<b>MW</b>	25.4 kDa
<b>Uniprot ID</b>	<b>P14784</b>
<b>NCBI</b>	<b>NP_000869.1</b>
<b>Expiration Date</b>	6 months from date of receipt.



SDS-PAGE analysis of Human IL-2 R beta protein



Human IL-2 R beta Protein, His Tag (Cat. No. orb257259) captured on CM5 chip via anti-His antibody, can bind Human IL-2, premium grade with an affinity constant of 1.62  $\mu$ M as determined in a SPR assay (Biacore T200) (QC tested).

**Biorbyt Ltd.**

7 Signet Court, Swann's Road,  
Cambridge, CB5 8LA, United Kingdom  
Email: [info@biorbyt.com](mailto:info@biorbyt.com), [support@biorbyt.com](mailto:support@biorbyt.com)  
Phone: [+44 \(0\) 1223 859-353](tel:+44(0)1223859353) | Fax: [+1 \(415\) 651-8558](tel:+1(415)6518558)

**Biorbyt LLC.**

68 TW Alexander Drive,  
Durham, NC, 27713, United States  
Email: [info@biorbyt.com](mailto:info@biorbyt.com), [support@biorbyt.com](mailto:support@biorbyt.com)  
Phone: [+1 \(415\) 906-5211](tel:+1(415)9065211) | Fax: [+1 \(415\) 651-8558](tel:+1(415)6518558)