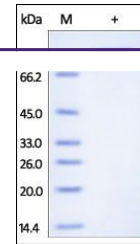


Product Datasheet

Human Cadherin-6 / KCAD / CDH6 Protein (orb257240)

Description

Human Cadherin-6, His Tag is expressed from



SDS-PAGE analysis of Human Cadherin-6 pr...

Ala 61...	
Reactivity	Human
Endotoxins	1.0 EU per µg
Conjugation	Unconjugated
Target	Cadherin-6
Preservatives	PBS, pH7.4
Form/Appearance	Powder
Storage	-20°C
Tag	C-6×His
Note	For research use only
Application notes	This protein carries a polyhistidine tag at the C-terminus. The Human Cadherin-6 will be further processed into mature form (Ser 54-Ala 615). The protein has a calculated MW of 67.2 kDa (pro-form) and 63.4 kDa (mature-form). The protein migrates as 86-96 kDa when calibrated against Star Ribbon Pre-stained Protein Marker under reducing (R) condition (SDS-PAGE) due to glycosylation.
Protein Sequence	AAH00019
Purity	85%
Source	Human Cadherin-6, His Tag (orb257240) is expressed from human 293 cells (HEK293). It contains AA Thr 19 - Ala 615 (Accession # AAH00019).
MW	67.2 kDa & 63.4 kDa
Uniprot ID	P55285
NCBI	AAH00019
Expiration Date	6 months from date of receipt.