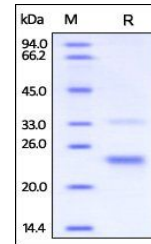


Product Datasheet

Human CD160 Protein (orb257230)

Description	Human CD160, His Tag is expressed from human 293 cells (HEK293). It contains AA Ile 27 - Ser 159 (Ac...
Reactivity	Human
Endotoxins	1.0 EU per µg
Conjugation	Unconjugated
Target	CD160
Preservatives	PBS, pH7.4
Form/Appearance	Powder
Storage	-20°C
Tag	C-10×His
Note	For research use only
Application notes	This protein carries a polyhistidine tag at the C-terminus. The protein has a calculated MW of 16.7 kDa. The protein migrates as 25-28 kDa under reducing (R) condition (SDS-PAGE) due to glycosylation.
Protein Sequence	NP_008984.1
Purity	90%
Source	Human CD160, His Tag (orb257230) is expressed from human 293 cells (HEK293). It contains AA Ile 27 - Ser 159 (Accession # O95971-1).
MW	16.7 kDa
Uniprot ID	O95971
NCBI	NP_008984.1
Expiration Date	6 months from date of receipt.



SDS-PAGE analysis of Human CD160 protein