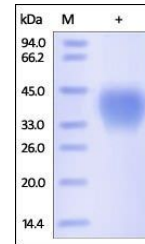


## Product Datasheet

### Human CD48 / SLAMF2 Protein (orb257218)

<b>Description</b>	Human CD48, His Tag is expressed from human 293 cells (HEK293). It contains AA Gln 27 - Ser 220 (Acc...
<b>Reactivity</b>	Human
<b>Endotoxins</b>	1.0 EU per µg
<b>Conjugation</b>	Unconjugated
<b>Target</b>	CD48
<b>Preservatives</b>	PBS, pH7.4
<b>Form/Appearance</b>	Powder
<b>Storage</b>	-20°C
<b>Tag</b>	C-6×His
<b>Note</b>	For research use only
<b>Application notes</b>	This protein carries a polyhistidine tag at the C-terminus. The protein has a calculated MW of 23.2 kDa. The protein migrates as 35-45 kDa under reducing (R) condition (SDS-PAGE) due to glycosylation.
<b>Protein Sequence</b>	AAH16182
<b>Purity</b>	95%
<b>Source</b>	Human CD48, His Tag (orb257218) is expressed from human 293 cells (HEK293). It contains AA Gln 27 - Ser 220 (Accession # AAH16182).
<b>MW</b>	23.2 kDa
<b>Uniprot ID</b>	<b>P09326</b>
<b>NCBI</b>	<b>AAH16182</b>
<b>Expiration Date</b>	6 months from date of receipt.



SDS-PAGE analysis of Human CD48 protein