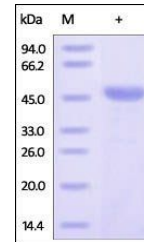


## Product Datasheet

### Human Bcl-x / BCL2L1 Protein (orb257217)

<b>Description</b>	Human Bcl-x, GST Tag is expressed from E. coli cells. It contains AA Ser 2 - Arg 212 (Accession # AA...
<b>Reactivity</b>	Human
<b>Endotoxins</b>	1.0 EU per µg
<b>Conjugation</b>	Unconjugated
<b>Target</b>	Bcl-x
<b>Preservatives</b>	20 mM Tris, 100 mM NaCl, pH7.5 with 10 mM GSH
<b>Form/Appearance</b>	Powder
<b>Storage</b>	-20°C
<b>Tag</b>	N-GST
<b>Note</b>	For research use only
<b>Application notes</b>	This protein carries a GST tag at the N-terminus. The protein has a calculated MW of 50.6 kDa. The protein migrates as 45-50 kDa under reducing (R) condition (SDS-PAGE).
<b>Protein Sequence</b>	AAH19307
<b>Purity</b>	92%
<b>Source</b>	Human Bcl-x, GST Tag (orb257217) is expressed from E.coli cells. It contains AA Ser 2 - Arg 212 (Accession # AAH19307).
<b>MW</b>	50.6 kDa
<b>Uniprot ID</b>	<a href="#">Q07817</a>
<b>NCBI</b>	<a href="#">AAH19307</a>
<b>Expiration Date</b>	6 months from date of receipt.



SDS-PAGE analysis of Human Bcl-x protein