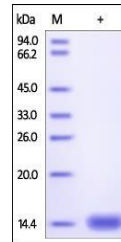


Product Datasheet

Cynomolgus / Rhesus macaque beta 2-Microglobulin / B2M Protein (orb257198)

Description	Cynomolgus / Rhesus macaque B2M, His Tag is expressed from human 293 cells (HEK293). It contains AA ...
Reactivity	Monkey
Endotoxins	1.0 EU per µg
Conjugation	Unconjugated
Target	beta 2-Microglobulin
Preservatives	PBS, pH7.4
Form/Appearance	Powder
Storage	-20°C
Tag	C-7×His
Note	For research use only
Application notes	This protein carries a polyhistidine tag at the C-terminus. The protein has a calculated MW of 12.6 kDa. The protein migrates as 14 kDa under reducing (R) condition (SDS-PAGE).
Protein Sequence	Ile 21 - Met 119
Purity	95%
Source	Cynomolgus / Rhesus macaque B2M, His Tag (orb257198) is expressed from human 293 cells (HEK293). It contains AA Ile 21 - Met 119 (Accession # Q8SPW0).
MW	12.6 kDa
Uniprot ID	Q8SPW0
Expiration Date	6 months from date of receipt.



SDS-PAGE analysis of Monkey beta 2-Micro...