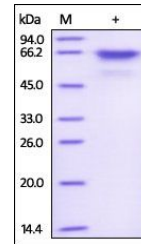


## Product Datasheet

### Human Akt1 Protein, Strep II Tag (orb257180)

<b>Description</b>	Human Akt1, His, Strep II Tag is expressed from human 293 cells (HEK293). It contains AA Met 1 - Ala ...
<b>Reactivity</b>	Human
<b>Endotoxins</b>	1.0 EU per µg
<b>Conjugation</b>	Unconjugated
<b>Target</b>	Akt1
<b>Preservatives</b>	20 mM Tris, 150 mM NaCl, pH8.0
<b>Form/Appearance</b>	Powder
<b>Storage</b>	-20°C
<b>Tag</b>	C-6×His & C-Twin-Strep
<b>Note</b>	For research use only
<b>Application notes</b>	This protein carries a polyhistidine tag at the C-terminus, followed by a twin strep tag. The protein has a calculated MW of 59.5 kDa. The protein migrates as 60-66 kDa under reducing (R) condition (SDS-PAGE) due to glycosylation.
<b>Protein Sequence</b>	AAH00479
<b>Purity</b>	92%
<b>Source</b>	Human Akt1, His, Strep II Tag (orb257180) is expressed from human 293 cells (HEK293). It contains AA Met 1 - Ala 480 (Accession # AAH00479).
<b>MW</b>	59.5 kDa
<b>Uniprot ID</b>	<a href="#">P31749</a>
<b>NCBI</b>	<a href="#">AAH00479</a>
<b>Expiration Date</b>	6 months from date of receipt.



SDS-PAGE analysis of Human Akt1 protein