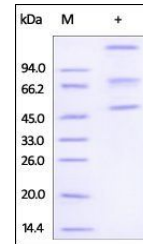


Product Datasheet

Human ADAM8 / CD156a Protein (orb257173)

Description	Human ADAM8, His Tag is expressed from human 293 cells (HEK293). It contains AA Ile 17 - Pro 497 (Ac...
Reactivity	Human
Endotoxins	1.0 EU per µg
Conjugation	Unconjugated
Target	ADAM8
Preservatives	50 mM Tris, 150 mM NaCl, pH7.5
Form/Appearance	Powder
Storage	-20°C
Tag	C-6×His
Note	For research use only
Application notes	This protein carries a polyhistidine tag at the C-terminus. The protein has a calculated MW of 53.8 kDa. Two main fragments bands are visible with apparent MW of 57-65 kDa and 35-40 kDa respectively in reduced SDS-PAGE as a result of its being prone to proteolytic cleavage.
Protein Sequence	AAI15405.1
Purity	90%
Source	Human ADAM8, His Tag (orb257173) is expressed from human 293 cells (HEK293). It contains AA Ile 17 - Pro 497 (Accession # AAI15405.1).
MW	53.8 kDa
Uniprot ID	P78325
NCBI	AAI15405.1
Expiration Date	6 months from date of receipt.



SDS-PAGE analysis of Human ADAM8 protein