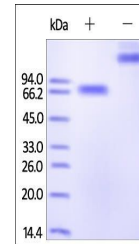


Product Datasheet

Human 2B4 / CD244 / SLAMF4 Protein (orb257161)

Description	Human 2B4, Fc Tag is expressed from human 293 cells (HEK293). It contains AA Cys 22 - Arg 221 (Acces...
Reactivity	Human
Endotoxins	1.0 EU per µg
Conjugation	Unconjugated
Target	2B4
Preservatives	50 mM Tris, 100 mM Glycine, 25 mM Arginine, 150 mM NaCl, pH7.5
Form/Appearance	Powder
Storage	-20°C
Tag	C-Fc
Note	For research use only
Application notes	This protein carries a human IgG1 Fc tag at the C-terminus. The protein has a calculated MW of 48.9 kDa. The protein migrates as 60-80 kDa under reducing (R) condition (SDS-PAGE) due to glycosylation.
Protein Sequence	NP_057466.1
Purity	95%
Source	Human 2B4, Fc Tag (orb257161) is expressed from human 293 cells (HEK293). It contains AA Cys 22 - Arg 221 (Accession # Q9BZW8-2).
MW	48.9 kDa
Uniprot ID	Q9BZW8
NCBI	NP_057466.1
Expiration Date	6 months from date of receipt.



SDS-PAGE analysis of Human 2B4 protein