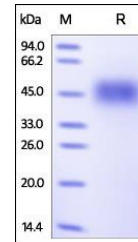


Product Datasheet

Human 2B4 / CD244 / SLAMF4 Protein (orb257160)

Description	Human 2B4, His Tag is expressed from human 293 cells (HEK293). It contains AA Cys 22 - Arg 221 (Acce...
Reactivity	Human
Endotoxins	1.0 EU per µg
Conjugation	Unconjugated
Target	2B4
Preservatives	PBS, pH7.4
Form/Appearance	Powder
Storage	-20°C
Tag	C-6×His
Note	For research use only
Application notes	This protein carries a polyhistidine tag at the C-terminus. The protein has a calculated MW of 23.1 kDa. The protein migrates as 35-55 kDa under reducing (R) condition (SDS-PAGE) due to glycosylation.
Protein Sequence	NP_057466.1
Purity	95%
Source	Human 2B4, His Tag (orb257160) is expressed from human 293 cells (HEK293). It contains AA Cys 22 - Arg 221 (Accession # Q9BZW8-2).
MW	23.1 kDa
Uniprot ID	Q9BZW8
NCBI	NP_057466.1
Expiration Date	6 months from date of receipt.



SDS-PAGE analysis of Human 2B4 protein