

---

## Product Datasheet

### Phospholamban (phospho-S16/T17) antibody (orb256755)

**Description**

Rabbit polyclonal antibody to Phospholamban

**Species/Host**

Rabbit

**Reactivity**

Human, Mouse, Porcine, Rabbit, Rat

**Conjugation**

Unconjugated

**Tested Applications**

IF, WB

**Immunogen**

KLH-conjugated synthetic phosphopeptide corresponding to residues surrounding S16/T17 of human Phospholamban protein. The exact sequence is proprietary.

**Target**

PLN

**Preservatives**

Liquid in 0.42% Potassium phosphate, 0.87% Sodium chloride, pH 7.3, 30% glycerol, and 0.01% sodium azide.

**Form/Appearance**

Liquid in 0.42% Potassium phosphate, 0.87% Sodium chloride, pH 7.3, 30% glycerol, and 0.01% sodium azide.

**Storage**

Maintain refrigerated at 2-8°C for up to 2 weeks. For long term storage store at -20°C in small aliquots to prevent freeze-thaw cycles.

**Note**

For research use only

**Clonality**

Polyclonal

**Source**

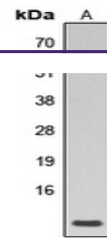
Rabbit

**Uniprot ID**
[P61014](#), [P61016](#), [P26678](#)
**Entrez**
[18821](#), [64672](#), [5350](#)
**Dilution Range**

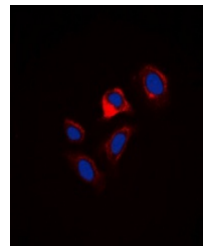
WB: 1:500-1000, IF/ICC: 1:100-500

**Expiration Date**

12 months from date of receipt.



Western blot analysis of Phospholamban (...



Immunofluorescent analysis of Phospholam...