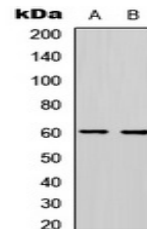


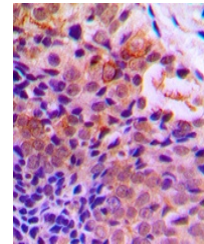
Product Datasheet

PDCD4 (phospho-S457) antibody (orb256744)

Description	Rabbit polyclonal antibody to PDCD4 (phospho-S457)
Species/Host	Rabbit
Reactivity	Human, Mouse, Rat
Conjugation	Unconjugated
Tested Applications	IH, WB
Immunogen	KLH-conjugated synthetic phosphopeptide corresponding to residues surrounding S457 of human PDCD4 protein. The exact sequence is proprietary.
Target	PDCD4
Preservatives	Liquid in 0.42% Potassium phosphate, 0.87% Sodium chloride, pH 7.3, 30% glycerol, and 0.01% sodium azide.
Form/Appearance	Liquid in 0.42% Potassium phosphate, 0.87% Sodium chloride, pH 7.3, 30% glycerol, and 0.01% sodium azide.
Storage	Shipped at 4°C. Upon delivery aliquot and store at -20°C for one year. Avoid freeze/thaw cycles.
Note	For research use only
Clonality	Polyclonal
Source	Rabbit
Uniprot ID	Q9JID1 , Q53EL6 , Q61823
Entrez	27250 , 64031 , 18569
Dilution Range	WB: 1:500-1000, IHC-P: 1:100-200
Expiration Date	12 months from date of receipt.



Western blot analysis of PDCD4 (Phospho-S457) in lanes A and B.



Immunohistochemical analysis of PDCD4 (Phospho-S457) in tissue sections.