
Product Datasheet

Glucocorticoid R (phospho-S211) antibody (orb256727)

Description

Rabbit polyclonal antibody to Glucocorticoid

Species/Host

Rabbit

Reactivity

Human, Mouse

Conjugation

Unconjugated

Tested Applications

IH, WB

Immunogen

KLH-conjugated synthetic phosphopeptide corresponding to residues surrounding S211 of human Glucocorticoid Receptor protein. The exact sequence is proprietary.

Target

NR3C1

Preservatives

Liquid in 0.42% Potassium phosphate, 0.87% Sodium chloride, pH 7.3, 30% glycerol, and 0.01% sodium azide.

Form/Appearance

Liquid in 0.42% Potassium phosphate, 0.87% Sodium chloride, pH 7.3, 30% glycerol, and 0.01% sodium azide.

Storage

Maintain refrigerated at 2-8°C for up to 2 weeks. For long term storage store at -20°C in small aliquots to prevent freeze-thaw cycles.

Note

For research use only

Clonality

Polyclonal

Source

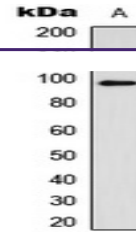
Rabbit

Uniprot ID
[P04150](#), [P06537](#)
Entrez
[2908](#)
Dilution Range

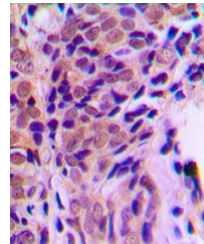
WB: 1:500-1000, IHC-P: 1:100-200

Expiration Date

12 months from date of receipt.



Western blot analysis of Glucocorticoid ...



Immunohistochemical analysis of Glucocor...