
Product Datasheet

**NF-kappaB p100 (phospho-S865) antibody
(orb256720)**

Description

Rabbit polyclonal antibody to NF-kappaB

Species/Host

Rabbit

Reactivity

Human, Mouse, Porcine, Rat

Conjugation

Unconjugated

Tested Applications

IF, IH, IP, WB

Immunogen

KLH-conjugated synthetic phosphopeptide corresponding to residues surrounding S865 of human NF-kappaB p100 protein. The exact sequence is proprietary.

Target

NFkB2

Preservatives

Liquid in 0.42% Potassium phosphate, 0.87% Sodium chloride, pH 7.3, 30% glycerol, and 0.01% sodium azide.

Form/Appearance

Liquid in 0.42% Potassium phosphate, 0.87% Sodium chloride, pH 7.3, 30% glycerol, and 0.01% sodium azide.

Storage

Maintain refrigerated at 2-8°C for up to 2 weeks. For long term storage store at -20°C in small aliquots to prevent freeze-thaw cycles.

Note

For research use only

Clonality

Polyclonal

Source

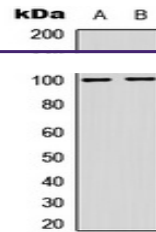
Rabbit

Uniprot ID
[Q00653](#), [Q9WTK5](#)
Entrez
[4791](#), [18034](#)
Dilution Range

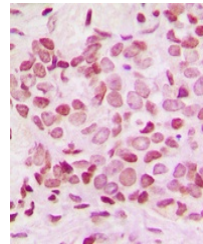
WB: 1:500-1000, IHC-P: 1:100-200, IF/ICC: 1:100-500, IP: 1:10-100

Expiration Date

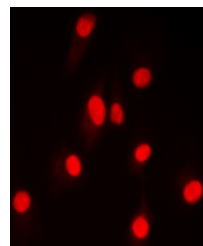
12 months from date of receipt.



Western blot analysis of NF-kappaB p100 ...



Immunohistochemical analysis of NF-kappa...



Immunofluorescent analysis of NF-kappaB ...