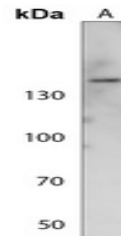


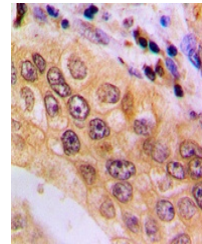
Product Datasheet

NFAT3 (phospho-S676) antibody (orb256717)

Description	Rabbit polyclonal antibody to NFAT3 (phospho-S676)
Species/Host	Rabbit
Reactivity	Human, Mouse
Conjugation	Unconjugated
Tested Applications	IF, IH, WB
Immunogen	KLH-conjugated synthetic phosphopeptide corresponding to residues surrounding S676 of human NFAT3 protein. The exact sequence is proprietary.
Target	NFATC4
Preservatives	Liquid in 0.42% Potassium phosphate, 0.87% Sodium chloride, pH 7.3, 30% glycerol, and 0.01% sodium azide.
Form/Appearance	Liquid in 0.42% Potassium phosphate, 0.87% Sodium chloride, pH 7.3, 30% glycerol, and 0.01% sodium azide.
Storage	Maintain refrigerated at 2-8°C for up to 2 weeks. For long term storage store at -20°C in small aliquots to prevent freeze-thaw cycles.
Note	For research use only
Clonality	Polyclonal
Source	Rabbit
Uniprot ID	Q14934
Entrez	4776
Dilution Range	WB: 1:500-1000, IHC-P: 1:100-200, IF/ICC: 1:100-500
Expiration Date	12 months from date of receipt.



Western blot analysis of NFAT3 (Phospho-S676)



Immunohistochemical analysis of NFAT3 (Phospho-S676)



Immunofluorescent analysis of NFAT3 (Phospho-S676)