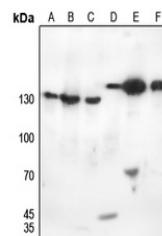


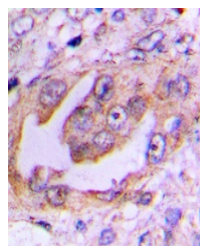
Product Datasheet

EG5 (phospho-T926) antibody (orb256645)

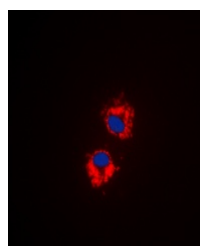
Description	Rabbit polyclonal antibody to EG5 (phospho-T926)
Species/Host	Rabbit
Reactivity	Human, Mouse, Rat
Conjugation	Unconjugated
Tested Applications	IF, IH, WB
Immunogen	KLH-conjugated synthetic phosphopeptide corresponding to residues surrounding T926 of human EG5 protein. The exact sequence is proprietary.
Target	KIF11
Preservatives	Liquid in 0.42% Potassium phosphate, 0.87% Sodium chloride, pH 7.3, 30% glycerol, and 0.01% sodium azide.
Form/Appearance	Liquid in 0.42% Potassium phosphate, 0.87% Sodium chloride, pH 7.3, 30% glycerol, and 0.01% sodium azide.
Storage	Maintain refrigerated at 2-8°C for up to 2 weeks. For long term storage store at -20°C in small aliquots to prevent freeze-thaw cycles.
Note	For research use only
Clonality	Polyclonal
Source	Rabbit
Uniprot ID	P52732
Entrez	3832
Dilution Range	WB: 1:500-1000, IHC-P: 1:100-200, IF/ICC: 1:100-500
Expiration Date	12 months from date of receipt.



Western blot analysis of EG5 (Phospho-T926)



Immunohistochemical analysis of EG5 (Phospho-T926)



Immunofluorescent analysis of EG5 (Phospho-T926)