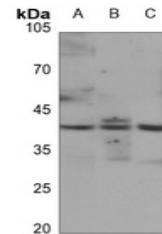


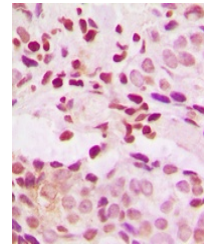
Product Datasheet

JUNB (phospho-S259) antibody (orb256641)

Description	Rabbit polyclonal antibody to JUNB (phospho-S259)
Species/Host	Rabbit
Reactivity	Human, Mouse, Rat, Sheep
Conjugation	Unconjugated
Tested Applications	IH, IP, WB
Immunogen	KLH-conjugated synthetic phosphopeptide corresponding to residues surrounding S259 of human JUNB protein. The exact sequence is proprietary.
Target	JUNB
Preservatives	Liquid in 0.42% Potassium phosphate, 0.87% Sodium chloride, pH 7.3, 30% glycerol, and 0.01% sodium azide.
Form/Appearance	Liquid in 0.42% Potassium phosphate, 0.87% Sodium chloride, pH 7.3, 30% glycerol, and 0.01% sodium azide.
Storage	Maintain refrigerated at 2-8°C for up to 2 weeks. For long term storage store at -20°C in small aliquots to prevent freeze-thaw cycles.
Note	For research use only
Clonality	Polyclonal
Source	Rabbit
Uniprot ID	P24898 , P09450 , P17275
Entrez	16477 , 24517 , 3726
Dilution Range	WB: 1:500-1000, IHC-P: 1:100-200, IP: 1:10-100
Expiration Date	12 months from date of receipt.



Western blot analysis of JUNB (Phospho-S259)



Immunohistochemical analysis of JUNB (Phospho-S259)