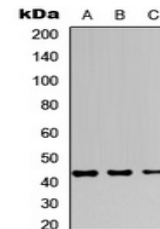


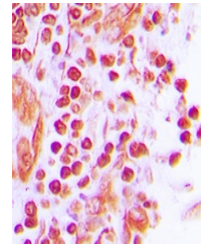
Product Datasheet

JUNB antibody (orb256640)

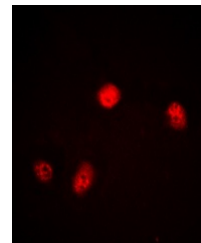
Description	Rabbit polyclonal antibody to JUNB
Species/Host	Rabbit
Reactivity	Human, Mouse, Rat, Sheep
Conjugation	Unconjugated
Tested Applications	IF, IH, IP, WB
Immunogen	KLH-conjugated synthetic peptide encompassing a sequence within the C-term region of human JUNB. The exact sequence is proprietary.
Target	JUNB
Preservatives	Liquid in 0.42% Potassium phosphate, 0.87% Sodium chloride, pH 7.3, 30% glycerol, and 0.01% sodium azide.
Form/Appearance	Liquid in 0.42% Potassium phosphate, 0.87% Sodium chloride, pH 7.3, 30% glycerol, and 0.01% sodium azide.
Storage	Maintain refrigerated at 2-8°C for up to 2 weeks. For long term storage store at -20°C in small aliquots to prevent freeze-thaw cycles.
Note	For research use only
Clonality	Polyclonal
Source	Rabbit
Uniprot ID	P24898 , P09450 , P17275
Entrez	16477 , 24517 , 3726
Dilution Range	WB: 1:500-1000, IHC-P: 1:100-200, IF/ICC: 1:100-500, IP: 1:10-100
Expiration Date	12 months from date of receipt.



Western blot analysis of JUNB expression...



Immunohistochemical analysis of JUNB sta...



Immunofluorescent analysis of JUNB stain...