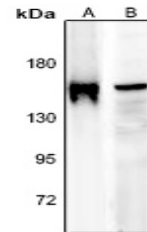


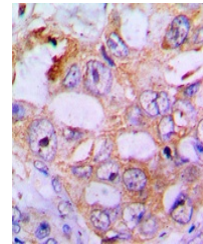
Product Datasheet

IRS1 (phospho-S636) antibody (orb256632)

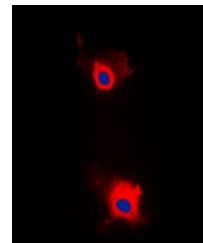
Description	Rabbit polyclonal antibody to IRS1 (phospho-S636)
Species/Host	Rabbit
Reactivity	Human, Mouse, Porcine, Rat
Conjugation	Unconjugated
Tested Applications	IF, IH, WB
Immunogen	KLH-conjugated synthetic phosphopeptide corresponding to residues surrounding S636 of human IRS1 protein. The exact sequence is proprietary.
Target	IRS1
Preservatives	Liquid in 0.42% Potassium phosphate, 0.87% Sodium chloride, pH 7.3, 30% glycerol, and 0.01% sodium azide.
Form/Appearance	Liquid in 0.42% Potassium phosphate, 0.87% Sodium chloride, pH 7.3, 30% glycerol, and 0.01% sodium azide.
Storage	Maintain refrigerated at 2-8°C for up to 2 weeks. For long term storage store at -20°C in small aliquots to prevent freeze-thaw cycles.
Note	For research use only
Clonality	Polyclonal
Source	Rabbit
Uniprot ID	P35568, P35569, P35570
Entrez	16367, 25467, 3667
Dilution Range	WB: 1:500-1000, IHC-P: 1:100-200, IF/ICC: 1:100-500
Expiration Date	12 months from date of receipt.



Western blot analysis of IRS1 (Phospho-S636)



Immunohistochemical analysis of IRS1 (Phospho-S636)



Immunofluorescent analysis of IRS1 (Phospho-S636)