
Product Datasheet

Histone H3 (AcK18) antibody (orb256596)

Description

Rabbit polyclonal antibody to Histone H3

Species/Host

Rabbit

Reactivity

Human, Mouse, Porcine, Rabbit, Rat, Zebrafish

Conjugation

Unconjugated

Tested Applications

IF, IH, WB

Immunogen

KLH-conjugated synthetic acetylated peptide corresponding to residues surrounding K18 of human Histone H3 protein. The exact sequence is proprietary.

Target

HIST1H3A; HIST1H3B; HIST1H3C; HIST1H3D; HIST1H3E; HIST1H3F; HIST1H3G; HIST1H3H; HIST1H3I; HIST1H3J; HIST2H3A; HIST2H3C; HIST2H3D; H3F3A; H3F3B

Preservatives

Liquid in 0.42% Potassium phosphate, 0.87% Sodium chloride, pH 7.3, 30% glycerol, and 0.01% sodium azide.

Form/Appearance

Liquid in 0.42% Potassium phosphate, 0.87% Sodium chloride, pH 7.3, 30% glycerol, and 0.01% sodium azide.

Storage

Maintain refrigerated at 2-8°C for up to 2 weeks. For long term storage store at -20°C in small aliquots to prevent freeze-thaw cycles.

Note

For research use only

Clonality

Polyclonal

Source

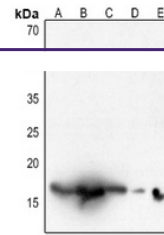
Rabbit

Uniprot ID
[P84228](#), [P68431](#), [P68433](#), [P84245](#), [Q6LED0](#), [Q71DI3](#), [P84243](#), [P84244](#)
Entrez
[15078](#), [8354](#), [8968](#), [100361558](#), [3020](#), [8352](#), [8357](#), [291159](#), [8355](#), [8353](#), [126961](#), [333932](#), [319152](#), [15077](#), [653604](#), [8358](#), [8351](#), [8350](#), [3021](#), [8356](#)
Dilution Range

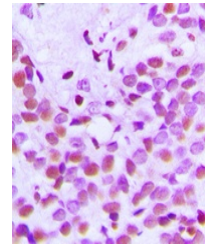
WB: 1:500-1000, IHC-P: 1:100-200, IF/ICC: 1:100-500

Expiration Date

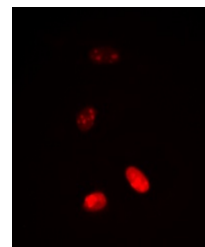
12 months from date of receipt.



Western blot analysis of Histone H3 (Acetylated)



Immunohistochemical analysis of Histone H3



Immunofluorescent analysis of Histone H3